

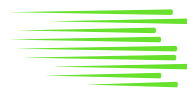
The Energy Management System (EMS) is the Central Nervous System of a battery storage or renewable energy project.

INTELLECT EMS FEATURES



Economic Optimization

Maximize savings and revenue. Dynamically adjust dispatch schedule when conditions change.



Ultra Efficient Optimization

Our **customized** optimization engine has unparalleled computational efficiency.



Safe, Compliant Operations

Protect equipment health and warranties to **reduce** operating costs.



Scalable Management

Intellect is built on **WattCore**, a universal optimization core that scales easily and quickly across multiple verticals.



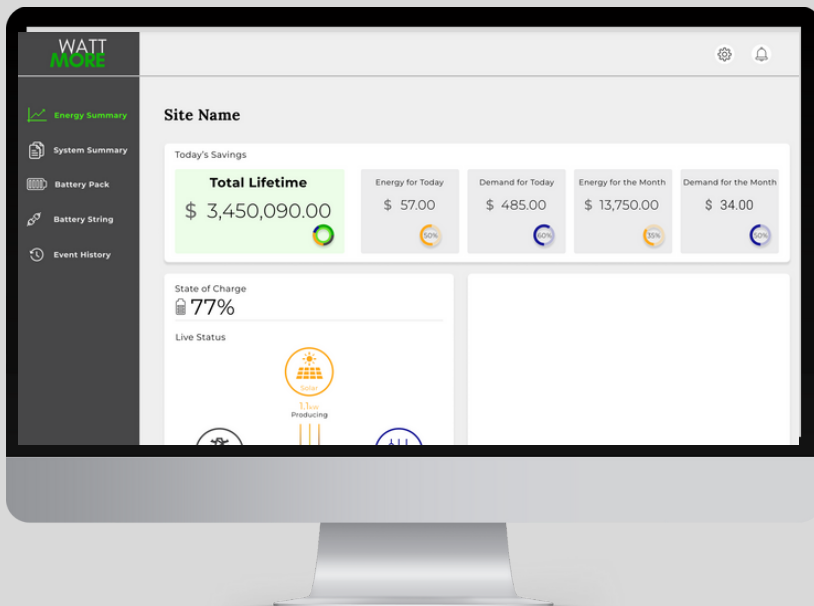
Battery & PCS Agnostic

Seamlessly integrate any unique combination of battery/inverter without being trapped in bundled solutions.



Machine Learning Pipelines

We built a platform, not just a single-site solution, utilizing the best in ML Ops to easily **manage thousands** of ML pipelines.



MONITORING DASHBOARD



Monitor system health and performance



Track savings and revenue



Receive alerts and notifications

Working with WATTMORE

"The Wattmore team has proven a valuable partner on a complex microgrid project development. Their storage and controls expertise have been instrumental to the success of our project."

- Nick Perugini, VP, Co-Owner, **Solaris Energy**



Getting Started

We work with Developers and IPPs building energy storage projects in the Commercial & Industrial and Utility spaces. We offer:

- EMS Controller
- 3-10 year Intellect software license
- (Optional) on-site asset integration



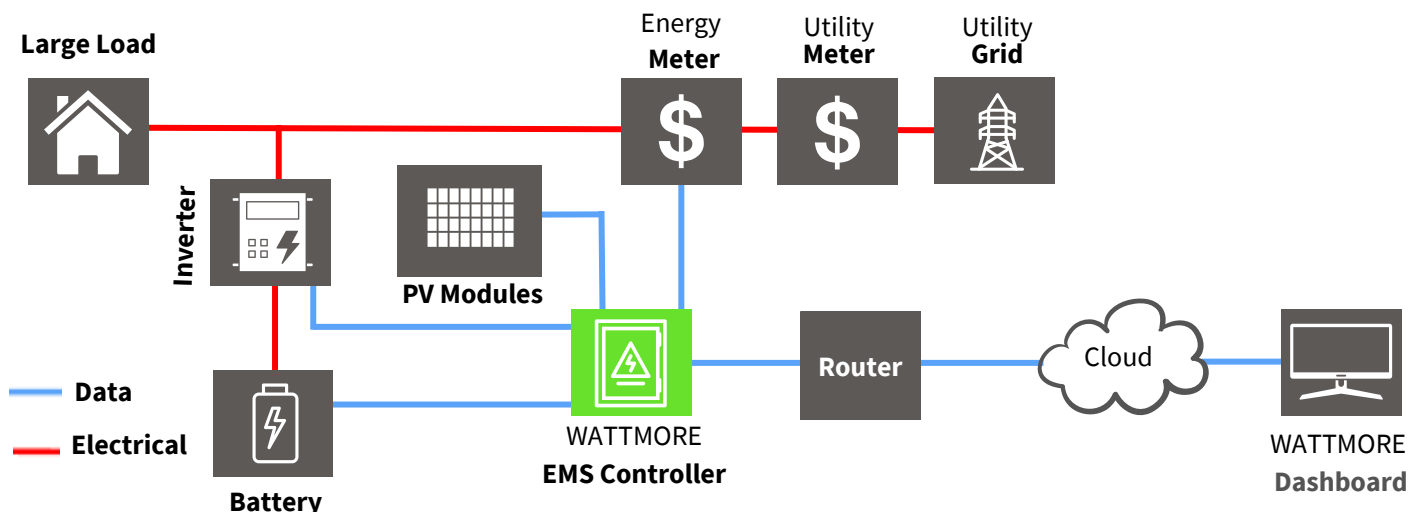
Pictured above: **Intellect** EMS on a Nuvo-7160 GC computer

Trying to add storage to your next solar, EV or microgrid project?

Retrofitting your solar portfolio with batteries?

Contact us for a quote and consultation at sales@wattmore.com

Simplified EMS System Design



*This design does not represent a complete schematic of a real project.

**The Intellect EMS can work with multiple battery packs. We will work with partners for custom designs.